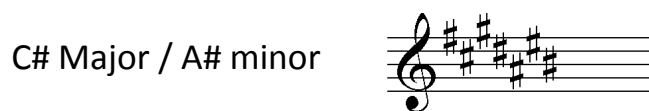
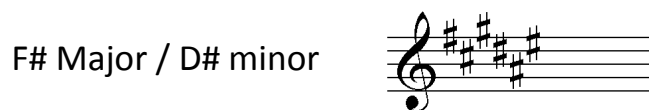
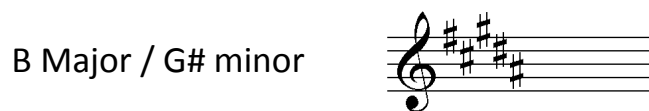
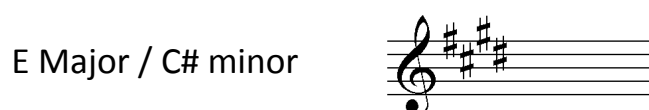
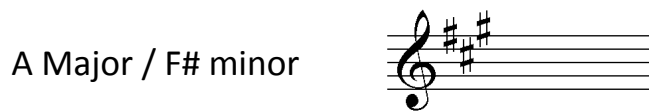
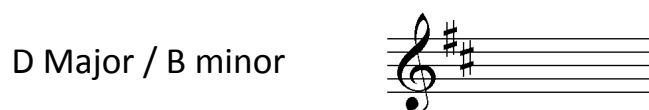
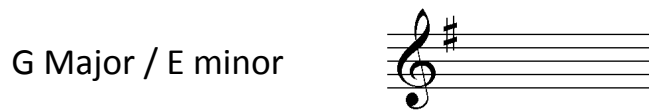
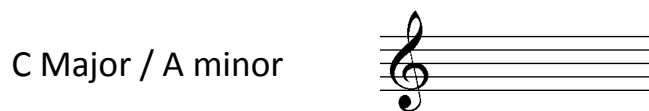
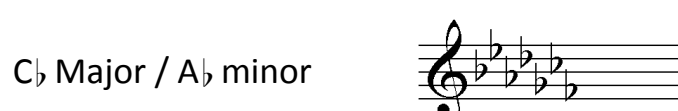
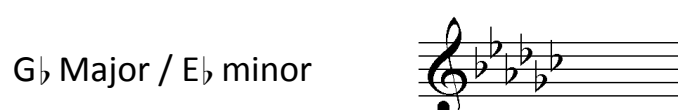
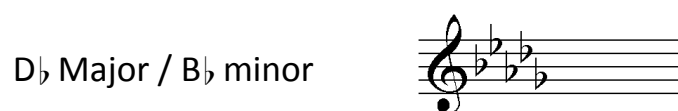
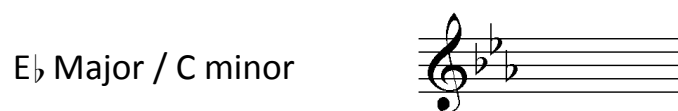
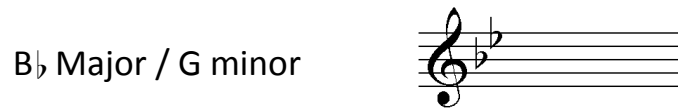
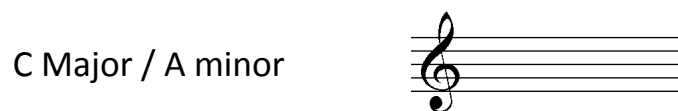


KEY SIGNATURE CHART

KEY SIGNATURES – Sharp keys

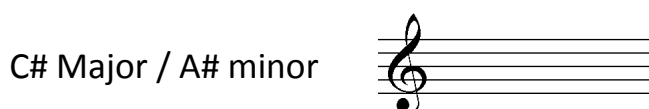
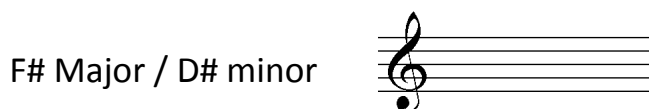
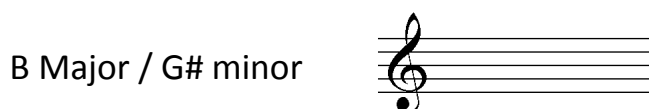
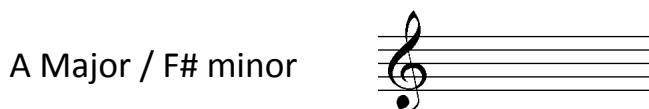
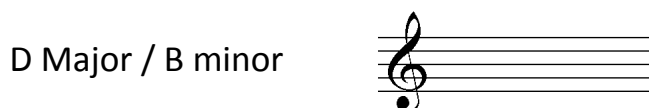
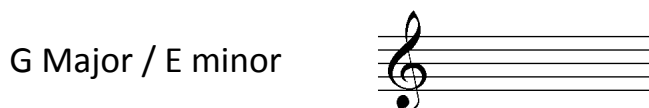
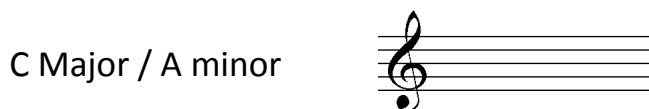


KEY SIGNATURES – Flat keys

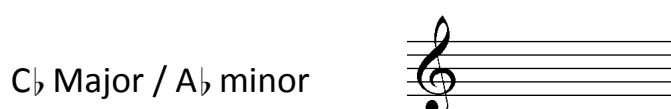
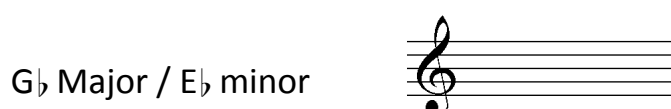
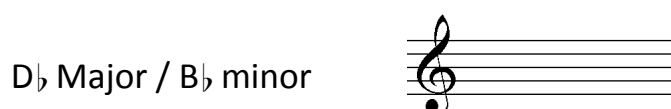
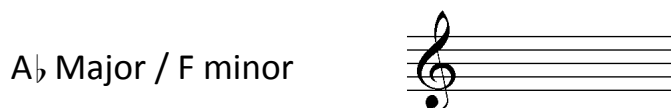
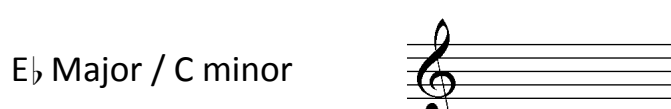
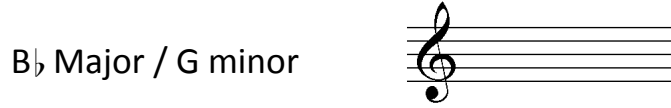
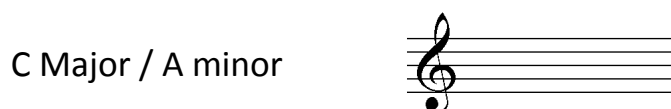


WRITING KEY SIGNATURES 1

KEY SIGNATURES – Sharp keys



KEY SIGNATURES – Flat keys

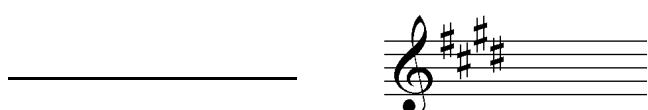
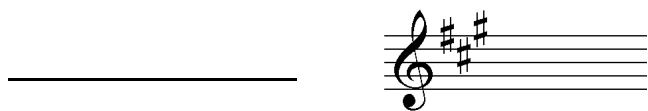
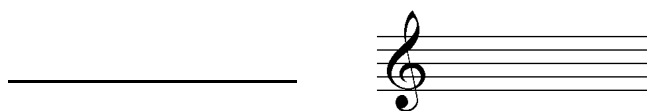


INSTRUCTIONS:

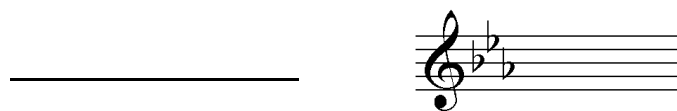
Write in the correct amount of sharp or flat symbols for each key signature. Be sure to place the symbol in its correct location on the staff. For example, the # symbol in the key of G major is located on the top line. Reference the KEY SIGNATURE CHART as needed at first.

IDENTIFY KEY SIGNATURES 1

KEY SIGNATURES – Sharp keys



KEY SIGNATURES – Flat keys



INSTRUCTIONS:

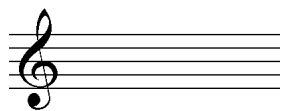
Write in the correct key signature name for each key.

Be sure to include both the major and minor name/
for example:

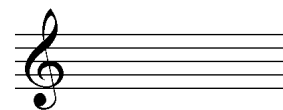
the key signature with no sharps or flats is C Major / A Minor

WRITING KEY SIGNATURES 2

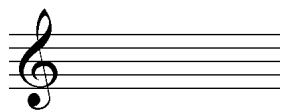
C \flat Major / A \flat minor



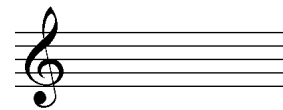
G \flat Major / E \flat minor



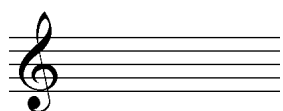
D Major / B minor



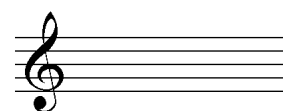
C Major / A minor



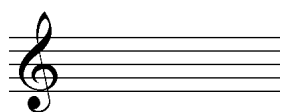
G Major / E minor



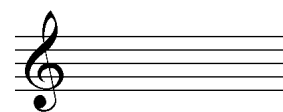
B Major / G \sharp minor



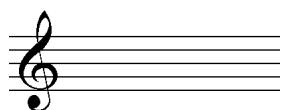
F Major / D minor



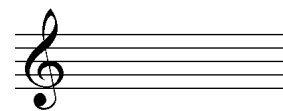
C \sharp Major / A \sharp minor



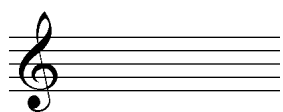
D \flat Major / B \flat minor



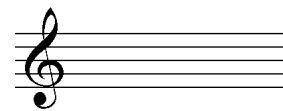
A \flat Major / F minor



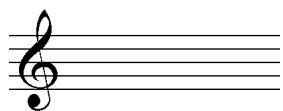
B \flat Major / G minor



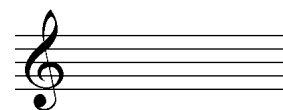
E Major / C \sharp minor



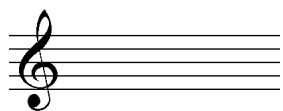
F \sharp Major / D \sharp minor




A Major / F \sharp minor



E \flat Major / C minor



IDENTIFY KEY SIGNATURES 2

_____		_____	
_____		_____	
_____		_____	
_____		_____	
_____		_____	
_____		_____	
_____		_____	
_____			